

# MULTI FUEL HEATING SOLUTIONS FOR YOUR HOME

Call Today: 051 595003 - Email: sales@blacksmithstoves.ie

**Blacksmith<sup>®</sup>**

Blacksmith Stoves Ireland - "A Cast Iron Masterpiece"

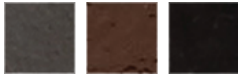


## Anvil - Non Boiler & DHW models

The Anvil is the smallest Blacksmith multi fuel stove yet has an impressive radiant heat output for its compact size. Beautifully made in cast iron, the Anvil is available in matt black and enamel finishes. It comes in non boiler and boiler format, allowing it to heat a domestic hot water cylinder and in some cases will also run 1-2 small radiators.

Neat and elegant in design the Anvil complements a contemporary or traditional interior. With a clear view of the flames through the generously sized front glass, the presence of an Anvil creates a warm and welcoming focal point in any room. For long lasting warmth and value combined with tidy elegance, the Anvil is the perfect choice of Blacksmith stove.

Available in matt black, brown enamel or black enamel finish (Non Boiler).  
Available in matt black and black enamel finish (DHW models).



**5** Blacksmith Stoves  
**Year Warranty**  
On all external Castings



## Technical Specifications

### Output:

Non-Boiler model 6kW (21,000 BTU)

Boiler model (DHW) 4kW (14,000 BTU) to room  
2kW (7,000 BTU) to water.

Efficiency: Up to 80%

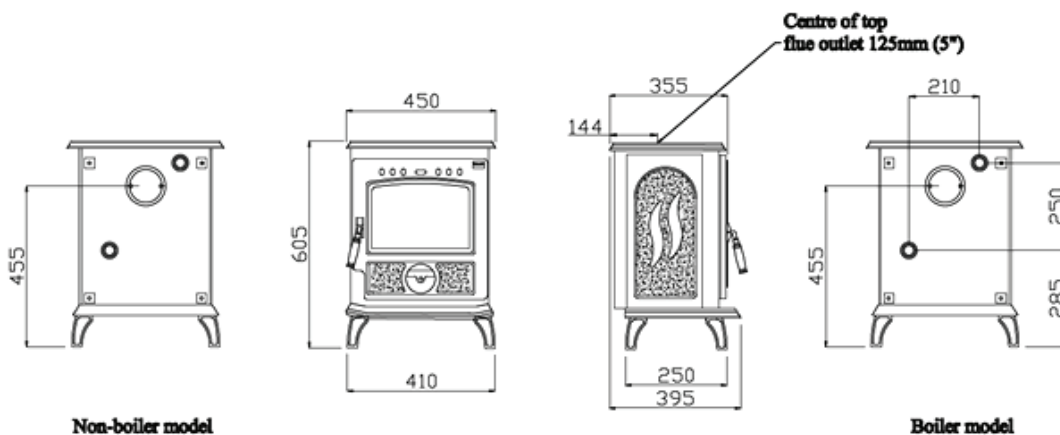
Dimensions: See Below

Weight: ca 79 KG

Flue Diameter: 125mm (5") Nominal Flue outlet top or back

### Additional Features:

- Primary and Secondary air controls
- Air wash for clean glass
- Cleanburn technology
- Suitable for overnight burning
- Certified High Chrome internal castings



Legs adjustable for levelling

Manufactured to EN13240 and tested.